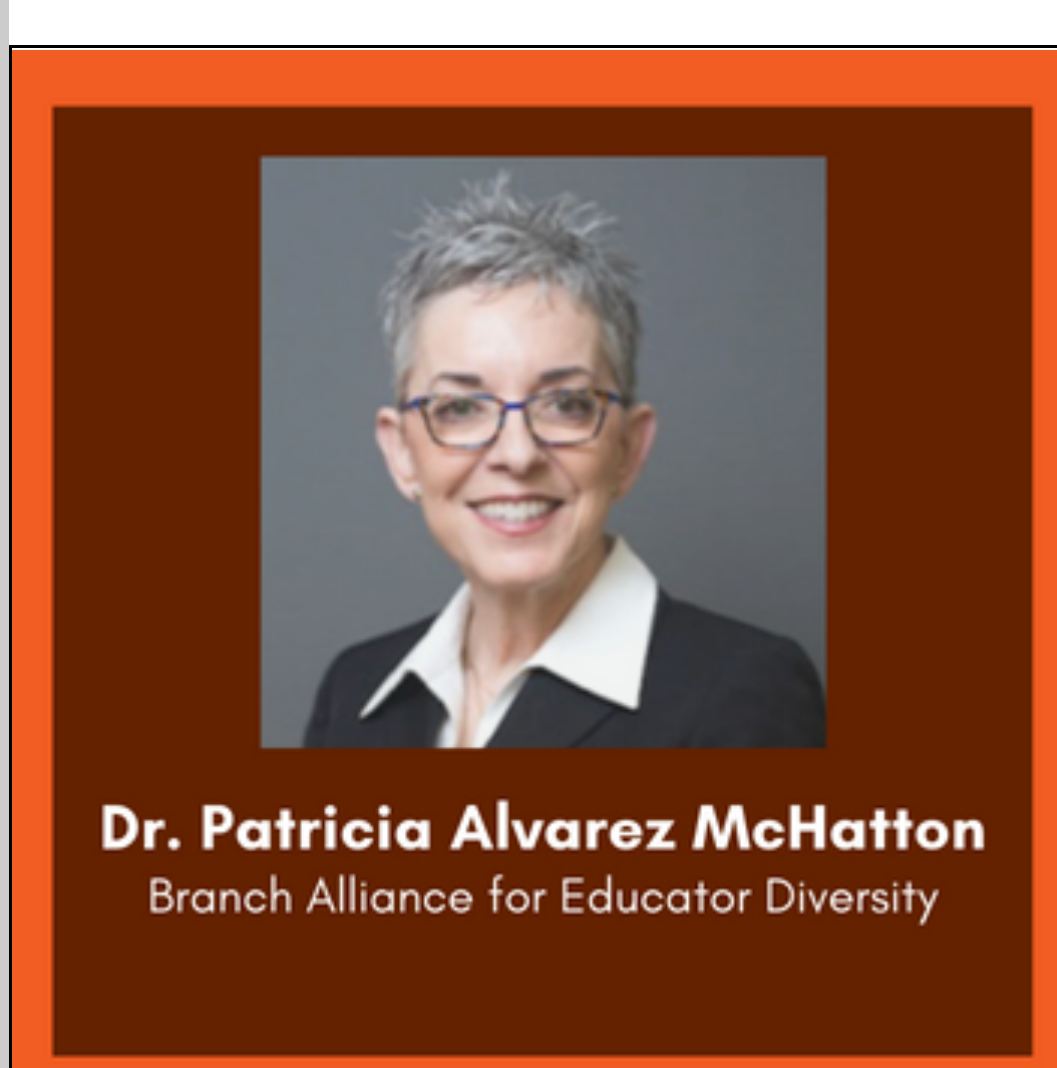


Register Today for Our Upcoming Events

September 2022



NUTS & BOLTS WEBINAR

The Road Map to Quality Preparation: An Introduction to BranchED's Signature Framework

SEPTEMBER 7, 2022 | 12 - 1 p.m. CT | Virtual

This Nuts & Bolts webinar will introduce the 6 design principles of BranchED's Framework for the Quality Preparation of Educators. This Framework offers educator preparation providers (EPPs) a common vision of what high quality, culturally sustaining educator preparation is and "a coherent and sustained approach" to implementing evidence-based preparation practices that accomplish vitally important educational equity work.

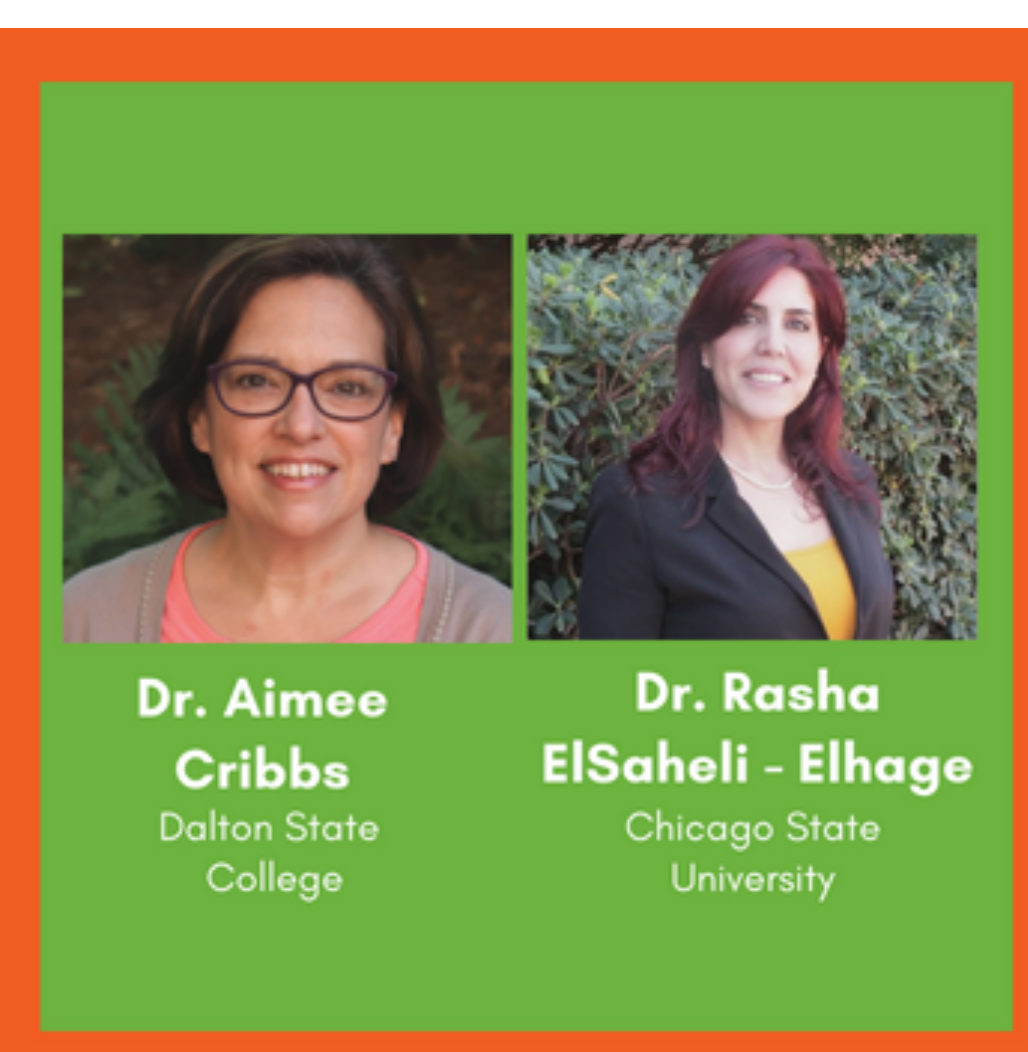
[Register for Webinar](#)

FALL WORKSHOP

Complexities in the Classroom: Engaging Teacher Candidates in Purposeful Practice

September 13, 2022 | 12 - 2 p.m. CT | Virtual

An important data point in educator preparation is the extent to which teacher candidates feel confident, efficacious, and/or ready to effectively work with diverse learners and address challenging situations within the classroom. This workshop focuses on vignettes and the use of Mixed Reality Simulation (MRS) as a tool to provide teacher candidates opportunities for purposeful practice addressing complexities in the classroom. A panel of faculty members that have used these vignettes within their coursework will share their own experiences and discuss bridges and barriers to this innovative approach.



[Register for this Workshop](#)



BranchED is pleased to announce the launch of our online learning modules on **September 14**, which will be made available to MSIs and other institutions not currently engaged with BranchED. The modules are available in the following formats:

- Asynchronous, self-paced modules: These are completed on your own timeline.
- Asynchronous, facilitated modules: These modules must be completed within a specified time span and may include an applied experience through mixed reality simulation (MRS). Want to know more about MRS, sign up for one of our [upcoming demonstration sessions](#).

Faculty, deans at MSI EPPs, and their district partners interested in these modules might be eligible for a limited number of scholarships to participate and are encouraged to [email us](#) about their interest.



Equity in Education: Creating Inclusive Learning Environments

The Equity in Education module explores the characteristics of dominant cultural values within learning environments, which allows participants an opportunity to examine their own practice and classroom structures with an equity lens. This module includes engagement with elements of learner-centered education and culturally relevant teaching to move toward a culture of inquiry. Participants will reflect upon their mindsets while learning strategies to create a culture that fosters cultural responsiveness, inquiry, and inclusivity. Progress is assessed via a variety of standard assessments and artifacts, including self-assessment, guided journal entries, facilitator-led discussions, and a culminating applied learning experience encompassing a mixed-reality simulation.

Registration Deadline: September 14

Course Begins: September 19

Cost for the Equity in Education Online Module

- Asynchronous, facilitated module: This module must be completed within 6 weeks and may include an applied experience through mixed reality simulation (MRS).

\$175/ per person



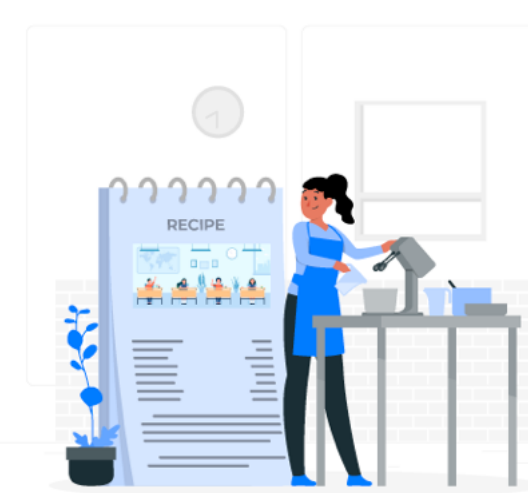
Inclusive Instruction Series: Humanizing Instruction

In the "Humanizing Instruction" module, you will learn from Dr. Maria Salazar. In this module Dr. Salazar describes the foundations of humanizing pedagogy along with her own narrative journey in education. This module includes how to identify outcomes associated with a humanizing pedagogy and instruction on approaches to prepare humanizing pre-service teachers.

Cost for Humanizing Instruction Module

- Asynchronous, self-paced module: This is completed on your own timeline.

\$30 / per person



The Perfect Recipe for Actualizing Inclusivity and Equity in an ELA Classroom

The English Language Arts (ELA) module in the Inclusive Instruction series applies inclusive instruction practices to EC-6 and higher education ELA teacher preparation classrooms. The goal of this module is to help teacher educators prepare teacher candidates for a diverse student population by modeling and teaching equitable teaching practices. This module was developed by English Language Arts (ELA) content area expert and teacher educator, Dr. Aimee Myers. The English Language Arts (ELA) Inclusive Instruction module applies Ghodly Muhammad's Culturally and Historically Responsive Literacy (CHRL) Framework. The four elements of the CHRL Framework, identity, skills, criticality, and intellect, provide a practical approach to English Language Arts (ELA) instruction both in EC-6 application and in teacher preparation classrooms. Each unit in the module includes instruction about how to apply the elements of the framework and examples to use in PK-12 settings as well as teacher education English Language Arts (ELA) methods courses.

Cost for Actualizing Inclusivity and Equity in ELA Online Module

- Asynchronous, self-paced module: This is completed on your own timeline.

\$30 / per person

[Contact Us to Learn More](#)

October 2022



FALL SUMMIT
OCTOBER 19 -21

MATH AS A SUPERPOWER:
TURNING MATHEMATICS FROM A PHOBIA TO AN ASSET

RALEIGH, NORTH CAROLINA
APPLY TODAY

Join us for our Fall Summit in Raleigh, North Carolina (October 19-21). We will explore the interconnectedness of mathematic teaching and learning and social and emotional learning, as well as how our early mathematical experiences impact our math identity and teaching behaviors. Research shows that pre-service teachers often have low level of confidence linked to negative experiences when learning mathematics during their own schooling, thus this affects instructional decision-making and use of curriculum materials. During this summit, participants will engage in interactive activities to explore and enhance their own mathematics toolkit that will help foster their teacher candidate's mathematics beliefs, attitudes, and knowledge for future success for themselves and their K-12 students. Participants who successfully meet summit objectives will receive a digital badge which they can share on their social/professional media platforms.

[Apply to Attend the Fall Summit](#)

The Data is in the Details WORKSHOP SERIES

Tackling Raw Datasets

Applying simple practices to organize and clean a raw dataset

The Data Empowerment Series aims to enable individuals to utilize data to support their Teacher Candidates. Presented in an engaging manner, these workshops are designed for anyone who is involved with TPP data—this means YOU! In these workshops, you will learn skills that will help you develop a culture of inquiry leading to data-informed decision making for program improvement. You will organize, explore, and analyze data to lead data conversations in different contexts for continuous improvement.



VIRTUAL
1 P.M. ET | 12 P.M. CT | 10 A.M. PT
Wednesday, October 5, 2022

[Register for this Workshop](#)